

**YALE ALUMNI (1963) - TOUR OF THE BRITISH ISLES
ENGLAND, WALES, SCOTLAND AND IRELAND**
20 Days London/London SEPTEMBER 10TH- 30TH , 2016



England: Journey through the lands of kings, queens, lairds and leprechauns! Begin in London with two overnights and guided sightseeing that features Parliament, Big Ben, Westminster Abbey, Buckingham Palace, and visits to St. Paul's Cathedral and the Changing of the Guard. Depart the city to admire the breathtaking gardens at Henry VIII's Hampton Court Palace, then venture on to prehistoric Stonehenge, picturesque Salisbury, and the Roman excavations at Bath.

Wales: Cross into Wales and spend the night in Newport, then to the Welsh capital of Cardiff

Ireland: Ferry across the Irish Sea to the Emerald Isle. Highlights include a guided visit of the House of Waterford Crystal, Blarney, the resort town of Killarney, the Ring of Kerry, Limerick, the Irish National Stud in Kildare, and an orientation drive in Dublin that includes St. Patrick's Cathedral and Trinity College. Then drive north and stay over in Belfast Northern Ireland.

Scotland: Ferry across the North Channel to Cairnryan on Scotland's southwest coast. Drive through scenic Scottish countryside to Edinburgh. Visit Edinburgh Castle and Holyrood Palace, and enjoy an evening of Scottish Highland dancers. Visit Glenkinchie Distillery. See a sheep herding demonstration.

England: On our way back to London, stops include the impressive gothic York Minster. Explore Shakespeare's Stratford-upon-Avon and visit beautiful Blenheim Palace. Return to London for two more days of tours and personal time. We will also enjoy some West End Theatre, a special tour of the U.S. Embassy, and a Y63 Euro-Reunion Gala Reception event. Then visit Windermere in the Lake District.

Cost: \$6,800 per person double occupancy for the full 20 days. Deduct \$825 if not taking the three day Lake District tour. This includes \$7,000 travel insurance per person. The full cost is inexpensive for a 20-day tour of this quality, 45% of comparable college alumni tours and 60% of the cost of the typical Viking Euro river tour. Not included: Airfare to/from London. All lunches, two breakfasts, and two dinners (to allow personal choices), pre-dinner cocktail hour. The final cost will depend on the actual participation count.

Deposits:

\$500 per person + \$307 travel insurance per person

Balance due June 1, 2016.

Deposits are refundable only through travel insurance.

The tour is limited to the first 44 who commit with deposits.

Tour sponsor: Yale Class of 1963

Tour Agent: Gardner Travel

Tour Operator: GlobusBritain

Tour/Fiscal Sponsor: Charity Enablers Foundation 501c3

www.lff1.org dba The Larson Family Foundation

Tour Directors: Jon Larson, Jim Thompson



Professional local Tour Guides with local experience, plus one overall guide included.

Luggage: All baggage handling pre-arranged. One full size suitcase plus one flexible carry-on per person.

Transportation: by First Class motorcoach. A/C, Wi-Fi, smoke free. Same driver throughout. Upholstered, reclining seats with headrests and individual air-conditioning vents. A high-fidelity sound system broadcasts professional Tour Director's commentary to every seat. Our custom of daily seat rotation gives everyone a variety of vantage points to see the passing countryside and city scenes. Emergency only W/C onboard.

Superior Hotels: 4 star. Local, traditional, comfortable, proximity to sites visited, twin bedded rooms w private bath/shower, all baggage handling included.

LONDON - Hilton Metropole (SF), NEWPORT - COLDRA COURT BY CELTIC MANOR (F), WATERFORD- Granville Hotel (F), KILLARNEY - Killarney Towers (SF), DUBLIN - Royal Marine Hotel (SF), BELFAST - Europa (SF), EDINBURGH - Hilton Grosvenor (F), WINDERMERE - MacDonald Old England (F), YORK - Holiday Inn (F) (F) STRATFORD-UPON-AVON - Holiday Inn (SF), LONDON - Park Plaza Westminster Bridge (SF) HEATHROW - Marriott (F)
HOTELS - (SF) Superior First-Class * (F) First-Class

Dining Highlights: Included: Full English breakfasts; ten three-course dinners with choice of menus, welcome dinner receptions in London and Newport, and a Y63 Euro-Reunion Gala Reception in London.

TOUR ITINERARY

(Subject to minor changes)

September **10 Travel Day** Saturday

Depart U.S. Most flights are overnight. Depart U.S. afternoon. Lose a calendar day. Arrive morning to noon on the 11th. Traveling east, you lose five hours from the East Coast and eight hours from the West Coast.

September **11 Arrive in London, England** Sunday (D)

Welcome to London! Depending on your arrival time, you are free to visit any of the many nearby sites and museums on your own. There is an optional afternoon tour of Windsor Castle including the Gallery, State Apartments and Queen Mary's Dolls' House. Evening welcome cocktail party followed by dinner at the Hilton London Metropole.

September **12 London** Monday (B,D)

Morning sightseeing with a local guide includes all the famous landmarks: the Houses of Parliament and Big Ben beside the Thames River, Westminster Abbey, Whitehall's mounted horse guards and the Prime Minister's Downing Street, Piccadilly Circus, and Buckingham Palace. Highlights are a visit to St. Paul's Cathedral and the ceremonial pageantry of the Changing of the Guard, if held. The entire afternoon is open for free time to use as you wish. There is a tour of Westminster followed by a tour of Greenwich area which includes the Royal Observatory, the National Maritime Museum, the Greenwich Meridian Time Line, Planetarium, Cutty Sark, and the Queen's House. Enjoy a private three hour dinner cruise on the Thames River with entertainment.

September **13 London -> Stonehenge -> Bath -> Newport, Wales** Tuesday (B,R,D)

Depart London at 8 am for a memorable day of sightseeing: a special visit to admire the breathtaking Ornamental Gardens of Henry VIII's Hampton Court Palace; prehistoric Stonehenge with its stunning new visitor center; and the amazing excavations of the Roman Baths in the elegant Georgian city of Bath. Cross the Severn River into Wales. Enjoy a special welcome reception and dinner with wine at our hotel, the Newport Hilton.

September 14 Newport -> Cardiff -> Waterford, Ireland Wednesday (B,D)

An orientation in the Welsh capital features the major attractions: Cardiff Castle, Cathays Park, and the stately civic buildings. Continue along the South Wales coast to Fishguard where our ferry is waiting. Sail across St. George's Channel to Rosslare and proceed by coach to Waterford, a stronghold founded by the Danish Vikings in 853. Cocktails and dinner at the Granville Hotel in Waterford.

September 15 Waterford -> Blarney -> Killarney Thursday (B,D)

A guided tour of the House of Waterford Crystal. Via the port city of Cork, motor to Blarney, renowned for its magical Kissing Stone, then on to Killarney for a two-night stay. Join an entertaining evening in Tralee with dinner followed by tickets for the Siamsa Tire National Folk Theatre.

September 16 Killarney. Ring of Kerry Excursion Friday (B,D)

Follow the road known as the Ring of Kerry for a spectacular 100-mile panoramic drive around the island's southwestern tip and take photos of the Lakes of Killarney from Ladies View.

September 17 Killarney -> Kildare -> Dublin Saturday (B,D)

Drive to quaint Adare with its colorful thatched cottages and on to the Rock of Cashel where St. Patrick preached. Then, visit the Irish National Stud and Gardens whose fine thoroughbreds command respect on the racecourses of the world. Tonight, enjoy an Irish cabaret evening in Dublin including dinner, dancing and song.

September 18 Dublin Sunday (B,D)

Get an overview of Ireland's capital as you drive to statue-lined O'Connell Street, elegant Georgian squares, St. Patrick's Cathedral, and Oscar Wilde's Trinity College. Enjoy a Jaunting Car horse drawn cart ride through the National Forest. The afternoon is at leisure for you to enjoy this vibrant city. Dinner and evening tour at the Guinness Storehouse.

September 19 Dublin -> Belfast, Northern Ireland Monday (B,D)

Set in 250 acres of park land, and formerly both fortress and private home of the Talbot family for nearly 800 years, our first visit is at Malahide Castle. Join our guide on a tour of the castle with its interesting mix of architectural styles, then stroll through the extensive gardens. On our way to Northern Ireland, cross the Boyne River and drive on to Belfast for a visit of the fascinating Titanic Exhibition where you learn all about the building of the largest passenger steam ship, its maiden voyage, and the tragic night of April 14, 1912.

September 20 Belfast -> Edinburgh, Scotland Tuesday (B,D)

First thing this morning, a "Living History" tour in the company of a local guide. See all the famous landmarks including the Parliament House at Stormont, City Hall, the Albert Memorial Clock Tower, and Queens University. Next, board our ferry to cross the North Channel to Cairnryan on Scotland's southwest coast and continue through the scenic Scottish border country to Edinburgh. Tonight, enjoy our Scottish evening with Highland dancers, bagpipers, dinner and the Robert Burns Ceremony of the Haggis.

September 21 Edinburgh Wednesday (B,D)

Morning city sightseeing with a local guide introduces you to the 200-year-old “New Town” and famous scientists, inventors, and novelists who lived there. In the “Old Town,” drive up the narrow Royal Mile to Edinburgh Castle to admire Scotland’s Crown Jewels, then explore HolyRood Palace. Afternoon tour of the famous Glenkinchie Distillery. Visit the Royal Yacht Britannia. Then share cocktails and a fine dinner.

September 22 Edinburgh -> York Thursday (B,D)

See a private demonstration of sheep herding by special working border collies at Carcant Farm in the Moorfoot Hills. Continue on to York, England’s most complete medieval city. Visit York Minster, the largest gothic cathedral in Northern Europe. Then, follow our Tour Director through a maze of quaint streets including the narrow Shambles.

September 23 York -> Coventry -> Stratford-Upon-Avon Friday (B,D)

In Coventry, view the splendid modern cathedral that rose from the rubble of severe World War II bombings. Then on to Stratford-upon-Avon. Take pictures of Anne Hathaway’s Cottage and visit Shakespeare’s birthplace.

September 24 Stratford-Upon-Avon -> London Saturday (B,D)

Today’s spectacular highlight is a guided tour of magnificent Blenheim Palace, home of the 11th Duke of Marlborough and birthplace of Sir Winston Churchill. End the tour in style with a glass of champagne while looking out over the Water Terraces. Depart after lunch and return to London at about 3:30 pm. Attend an uproarious Medieval Banquet with entertainment in the evening, with costumes available. Brush up your Shakespeare and some bawdy limericks for variety.

September 25 London Sunday (B)

A full day of more London sightseeing. We will start at 9:00am at Buckingham Palace to include the Staterooms, the Queen’s Gallery, the Royal Mews, and then enjoy lunch in the Garden Café. For the afternoon, Churchill War Rooms, and the Victoria and Albert Museum. Enjoy a 5pm matinee performance of the musical *Jersey Boys* at the Piccadilly Theatre in the West End theatre district. Dinner after the show is your personal choice. There are pubs in the area serving traditional fish and chips and more pedestrian menu. *Rules*, the oldest restaurant in London 1798, and *Quaglino*, are two upscale alternatives for top scale dining on your own. After dinner, taxi back to the Park Plaza Hotel.

September 26 London Monday (R,D)

More local museums and sites of London on our private coach in the morning until mid-afternoon. Tours include the British Museum, Westminster Abbey, and the National Gallery. You are free to leave and rejoin the tour any time during the day. Experience a private tour and briefing at the U.S. Embassy in the late afternoon. After a short stroll from the embassy, attend a Y63 Euro-Reunion Gala Reception and Dinner at the Savile Club, established in 1868 by a group of the most distinguished writers and artists of the time. It is a fine 18th Century house in the heart of Mayfair whose air of elegant exclusivity reflects the uniquely creative ambiance of the times which is preserved in the Savile Club.

September 27 London -> U.S. Tuesday

For some, our Tour ends. Morning flights back home. Arrive home the same day. Gain five hours to the East Coast and eight hours to the West Coast. The others will continue the tour for another three days to the English Lake District.

September 27 London -> English Lake District Tuesday (D)

Start your three day tour extension through the beautiful English Lake District. Morning take a comfortable two and a half hour train ride 200 miles north from London through the beautiful English countryside to Bowness-on-Windermere in the Lake District. Have lunch at charming historic Hawkshead Village. Afternoon area tour by mini-vans including the home of Beatrix Potter. Stay at the historic MacDonald Old England Hotel and Spa. Enjoy a pleasant evening of cocktails and dinner at the hotel.

September 28 English Lake District Wednesday (B,D)

Take a mini-bus tour of the many beautiful lakes and sights of the area including the Aira Force nature trail. Visit homes of great English authors including William Wordsworth. Enjoy the Ulswater cruise on the lake. Return to the historic MacDonald Old England Hotel and Spa. Enjoy a pleasant evening of cocktails and dinner at the hotel.

September 29 English Lake District -> London Thursday (B)

Morning optional guided nature walk along the lake. Lunch at the hotel. Thursday afternoon return via private coach direct to the Marriott Heathrow Airport. Farewell cocktails party.

September 30 Travel Day -> U.S. Friday

Morning flights back home. Arrive home the same day. Gain back five hours to the East Coast and eight hours to the West Coast.

Confirmed: (as of 6/1/2016)

	<u>Name</u>		<u>Travel mate</u>	<u>Email</u>	<u>Phone</u>
	<u>Confirmed</u>				
2	Allison	Ron	Cynthia	ronaldallison@hotmail.com	209-931-0390
2	Arnold	Phil	Allison	arnold_philip_dr@yahoo.com	203-298-9040
2	Bucchieri	Stephen	Jeanne	jbucchi@aol.com	216-780-7879
2	Curlee	William	Janis	wpcurlee@earthlink.net	314-432-1326
2	Carlson	Ed	Shirley	edgart902@hotmail.com	419-307-5536
2	Cooper	Craig	Barbara Sheridan	rcooperyale63@gmail.com	973-763-7696
2	Couchman	William	Laura	bill.couchman@aya.yale.edu	773-896-7837
2	Dennis	Ed	Martha	edennis@ucsd.edu	858-454-0333
2	Graybill	Doug	Lesia	doug@graybillgroup.com	772-231-0190
2	Hellar	Charles	Suzanne	chuckhellar@yahoo.com	253-564-7497
2	Impert	John	Annick	johnimpert@yahoo.com	206-524-5987
2	Johnston	Jere	Pat	jerejohnston@gmail.com	734-665-6339
2	Larson	Jon	Karen	jon_larson@hotmail.com	415-435-3222
2	Levy	Nelson	Weez	n.levy@comcast.net	772-600-5410
2	Martin	Geoff	Gwendolyn Hope	geoff.martin38@earthlink.net	212.406.9767
1	Struve	Guy	-	guy.struve@dpw.com	212-879-3865
2	Sweeney	David	Janice	d.sweeney@smithzuccarini.com	425-641-8323
2	Thiel	Fritz	Barbara	thiel_44264@yahoo.com	216-466-2069
2	Thompson	Jim	Mayda Tsaknis	JLThompson@mmcanby.com	240-687-5614
2	Wilder	Michael	Sandra Zieky	mswct@aol.com	860-521-6166
2	Worley	Richard	Marilyn Sue	dickandsueworley@yahoo.com	435-649-3302
41	total				

London:



Thames River Dinner Cruise Enjoy a relaxed evening river cruise on the Thames, viewing some of London's most beautiful illuminated sights. Enjoy a three-course dinner and scenic views from the comfort of our private Tower dining room. Highlights include the Tower Bridge at night, St. Paul's Cathedral, and the Houses of Parliament, all with music accompaniment, as you cruise for three hours from 8-11pm along the River Thames



Charles Dickens Museum The Charles Dickens Museum is an author's house museum at 48 Doughty Street in Holborn, London Borough of Camden. It occupies a typical Georgian terraced house which was Charles Dickens' home from 1837 to 1839. The museum holds over 100,000 items including manuscripts, rare editions, personal items, paintings and other visual sources. (optional)



Buckingham Palace Staterooms, the Royal Mews, and the Queen's Gallery

Buckingham Palace serves as both the office and London residence of Her Majesty The Queen. During August and September when the Queen makes her annual visit to Scotland, the Palace's state rooms are open to visitors. These are the heart of the Palace, lavishly furnished with some of the greatest treasures from the Royal Collection which are used for ceremonial occasions and official entertaining. Before entry to the Palace you will visit the Royal Mews, one of the finest working stables still in existence. See the State vehicles, both horse-drawn carriages and cars, used for coronations, royal weddings and State Visits. See the magnificent Gold State Coach which has been used for every coronation since 1821 and last used for The Queen's Golden Jubilee in 2002.



Tower of London and Crown Jewels The Tower of London is one of the most famous historic buildings in the world. Built by William the Conqueror in 1066-1067, it has been guarded by Yeoman Warders (popularly known as the Beefeaters) since the 14th century. It has been a fortress, a royal palace, a prison, a place of execution, and an armory. It is most famously known as the home to the priceless Crown Jewels, including the solid gold crown used at the coronation of Queen Elizabeth II, the Imperial State Crown and Sovereigns Sceptre, the incredible Cullinan diamonds, and the Koh-i-Noor. (optional)



U.S. Embassy

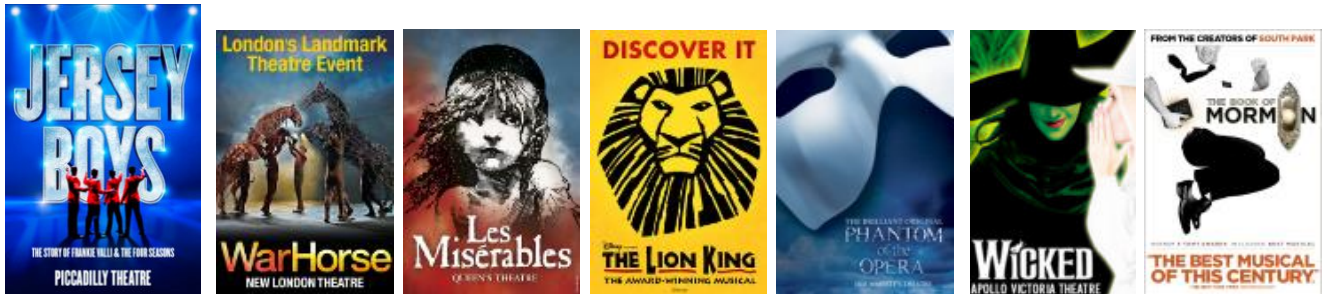
We will have a tour of the U.S. Embassy and a private briefing on US/UK relations and key issues of common concern and, if possible, a courtesy call by Ambassador Barzun.



Savile Club - Yale 1963 Euro-Reunion Gala Reception/Dinner

Established in 1868 by a group of the most distinguished writers and artists of the time, this fine 18th Century house in the heart of Mayfair projects an air of elegant exclusivity which reflects the uniquely creative ambiance preserved in the Club.





West End Theatre: Enjoy *Jersey Boys* with the group, or any of the “live” musical productions on your own.



Medieval Banquet:

Spend an evening enjoying a sumptuous repast from times long ago; costumes optional, Monumental Merriment, Mead and Mirth to share by all. Photo op with the King and Queen. Saucy wenches for the men and handsome blokes for the ladies galore.

Waterford

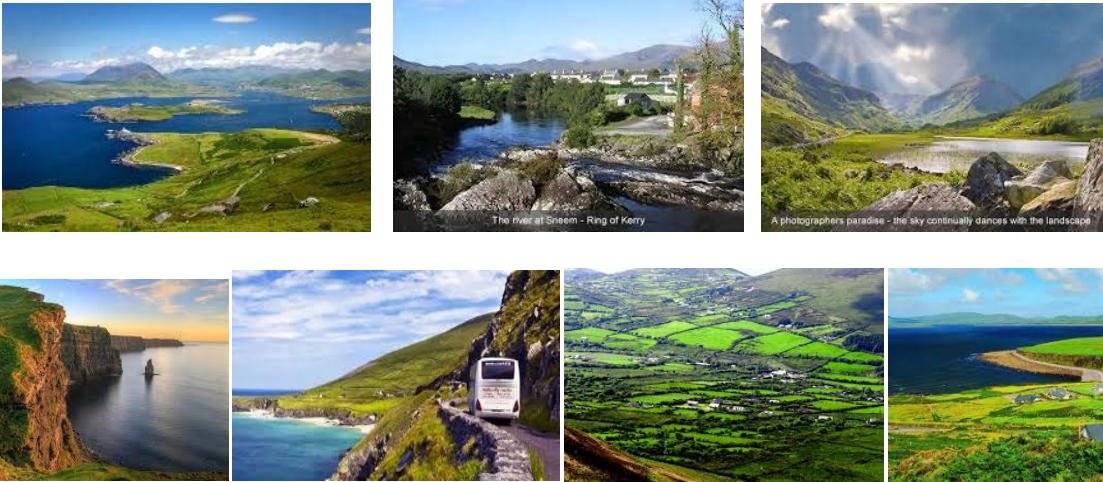


House of Waterford Crystal

Factory tour. The range and reach of Waterford Crystal has flourished to global proportions, yet the heart and soul of the company remains in the city of Waterford, Ireland. Here you will find the House of Waterford Crystal, a cultural landmark and tourist destination that is also an industrious manufacturing facility and the birthplace of Waterford Crystal's finest works. Using the traditional methods of mouth blowing, hand finishing, sculpting and engraving, the artisans of the House of Waterford Crystal melt over 750 tons of crystal per year to produce more than 45,000 high-end crystal creations. In addition to a full cadre of skilled and accomplished craftspeople, the House of Waterford Crystal also employs the talents of a team of celebrated designers who,

with artistic vision and years of crystal making expertise, create crystal designs with the unmistakable essence that inhabits every new piece of Waterford Crystal.

The Ring of Kerry The Ring of Kerry is a scenic drive around the Iveragh Peninsula in southwest Ireland's County Kerry. Its 180 km-long, circular route takes in rugged and verdant coastal landscapes and rural seaside villages through some of the most beautiful countryside in the world.



Killarney



Jaunting Car Ride through the National Park

When visiting Killarney, a gentle jaunting car ride should not be missed! Your "jarvey" will pick you up at the hotel and take you along Killarney National Park, Deer Park and on to Ross Castle on the shores of Lough Lein. There is time to take photographs of the restored 15th century castle in picture perfect setting, before taking a different route back to your hotel. All along the way, the driver will regale you with stories, anecdotes and local gossip.



Killarney Pub Evening:

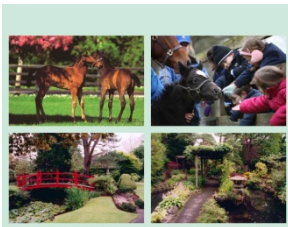
There is no better way to experience rural Ireland than to visit a traditional pub on this pre-dinner excursion. A scenic drive will take you to a traditional inn where live music is played. Join the locals in a bit of 'craic' while you enjoy two drinks of your choice and listen to some typical Irish music and songs.



Siamsa Tire National Folk Theatre Performance

Irish entertainment in its purest form. This unique experience begins with a visit to Ireland's famous Rose town, Tralee, where you enjoy dinner with wine at a local restaurant. Then, take your seats at the Siamsa Tire National Folk Theatre where the legendary heritage of Ireland is re-enacted in compelling songs and dance. This theater does a truly magnificent job of re-creating Ireland's Celtic roots with glorious visual, musical and magical productions.

Dublin:



Irish National Stud and Gardens

The Irish National Stud belongs to the people of Ireland but prides itself on being enjoyed and appreciated by visitors from all parts of the globe. Nowhere better symbolizes all that is great about County Kildare, the beating heart of Ireland's thoroughbred industry, than the stud, a unique attraction of outstanding natural beauty that is home to some of the most magnificent horses and sumptuous gardens to be found anywhere in the world.



Guinness Storehouse

Guinness is known the world over. Located in the heart of the St James's Gate Brewery, the Guinness Storehouse, a former fermentation plant, has been remodeled into the shape of a giant pint of Guinness. This visit will teach you everything about the world famous beer: from how Guinness is made, to the ancient craft of barrel making in the cooperage. The highlight is the 7th floor Gravity Bar, where you will sample a pint of "the black stuff" and enjoy the breathtaking views across Dublin City. Round the evening off with an excellent buffet dinner with wine.



Traditional Irish Cabaret Evening

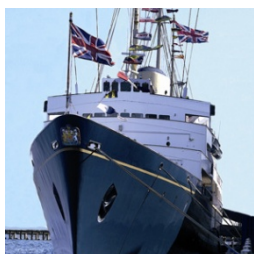
The enchanting evening starts with a four-course dinner with wine and a traditional Irish coffee. Then enjoy an evening of quality entertainment, celebrating the best of everything Irish in comedy, music, song & dance from Ireland's leading entertainers. Enjoy a lively blend of traditional Irish dance, ballads and tunes. The dancers thrill audiences as they twirl and tap with exuberance to the musical accompaniment of the accordion, uilleann pipes, guitar and piano. A fun and unforgettable evening.

Edinburgh



Scottish Evening with Bagpipers and the Ceremony of the Haggis

No visit to Scotland's capital city would be complete without joining a Scottish evening. A piper welcomes you in traditional Scottish style, then savor a delicious four-course banquet with wine and let your host lead you through an evening of music, song and dance culminating in the traditional Ceremony of the Haggis and the joint singing of 'Auld Lang Syne' written by Robert Burns.



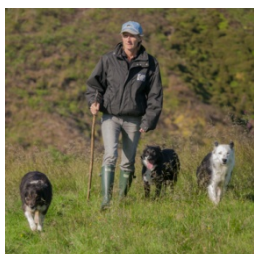
Royal Yacht Britannia

Enjoy a visit to the former Royal Yacht Britannia, which was used on over 700 overseas visits and sailed over a million nautical miles. Having served royalty and prime ministers and hosted presidents, the last commissioned royal yacht offers a rare opportunity to explore areas not normally seen on a conventional visit to a royal residence; from the bridge through the private and state apartments, from the officer and crew quarters to the engine room. After the visit, dine at a fine local restaurant.



Glenkinchie Distillery

lies in a glen of the Kinchie Burn near the village of Pencaitland, East Lothian about 15 miles from Edinburgh. Its origins date back to around 1825 when it was founded by brothers John and George Rate. The brothers probably renamed it in about 1837. In 1969 the distillery stopped malting its own grain and the malting floors were turned into a museum of malt whisky. The Glenkinchie label was relatively little known until 1989, when United Distillers started marketing it under their *Classic Malts* brand.



Sheep herding demonstration at Neth Hill Border Collies

Julie Hill has worked with Border Collies since 1982 and, since then, she has bred & trained a number of highly successful sheepdogs, both for farming and the trial field. She is a well known competitor and judge at sheepdog trials. She is renown for becoming the first and, currently only, woman to win the prestigious Supreme International Championship, and also one of the few people (either man or woman) who has won the International Brace Championship as well as the Supreme. Over the years, she has developed The Natural Way for training sheepdogs and she has taught this method at training clinics and to individual handlers across the world. Carcant Farm is set in the scenic Moorfoot hills only 25 miles from Edinburgh in Scotland. It is an ideal place for training sheepdogs as it has a variety of different terrains that range from smaller fields for inexperienced dogs to rugged hills and undulating moors that will test an experienced sheepdog to the highest level.

Stratford-on-Avon



Afternoon Tea in the Cotswolds

A drive into the rolling countryside of the Cotswolds Hills with its villages of honey-colored stone cottages and thatched roofs. Hear about rural England, its traditions and its folklore while savoring some of the finest scenery we have to offer. The area is well known for gentle hills, outstanding countryside with river valleys, sleepy ancient limestone villages, historic market towns and for being so 'typically English' where time has stood still for centuries. Enjoy scones with clotted cream, jam and freshly brewed tea.



Blenheim Palace is a monumental country house situated in Woodstock, Oxfordshire, England. It was the principal residence of the dukes of Marlborough, and the only non-royal non-episcopal country house in England to hold the title of palace. It is unique in its combined usage as a family home, mausoleum and national monument. The palace is also notable as the birthplace and ancestral home of Sir Winston Churchill.



Early arrivals the first day from the U.S. can step aboard one of the hop-on hop-off buses near the hotel and visit any of the many sites on your personal free time. Or take a taxi direct to a specific museum. Be back in time for our welcome reception cocktail party and dinner to follow at the Hilton Metropole or the Park Plaza Westminster. Bus tickets for the day can be purchased from the helpful concierge at our hotel.

London sites.

Many of the most popular sites in London are included in our tour package. - **National Gallery, - Victoria and Albert Museum, - British Museum, - Westminster Abbey, Greenwich: National Maritime Museum, Royal Observatory, Queen’s Home, - Tower of London, - St. Paul’s Cathedral, - Medieval Banquet**

Additional sites can be visited on your own during open times before, during or after the formal tour.
 - **Windsor Castle, - Royal Academy of Arts, - Science Museum, - Natural History Museum, - Churchill War Rooms, - Covent Gardens, - Royal Albert Hall, - Shakespeare Theatre**



National Gallery



Windsor Castle

More London tours.... (*=optional)



Royal Academy of Arts*



Royal Albert Hall*



Victoria and Albert Museum



Science Museum*



British Museum



Natural History Museum*



Churchill War Rooms*



Covent Garden*



Westminster Abbey



St. Paul's Cathedral



Westminster Bridge (near our hotel)



Big Ben, Parliament, London Eye*



Charles Dickens Museum*



Kensington Palace*



Buckingham Palace

More guided tour stops outside London:



Henry VIII's Hampton Court Palace



Roman excavations in Bath



Greenwich – National Maritime Museum



Stonehenge



Blarney



Trinity College Dublin



Edinburgh Castle



Holyrood Palace Edinburgh



St. Patrick's Cathedral Dublin



York Minster Cathedral



York Minster Cathedral



Anne Hathaway Cottage

Our Transportation:



Ferries across the Irish Sea



Globus MotorCoach



Rail/Europe-Britain



Taxi Cab



London Hop-on Hop-off Bus



Lake Ferry

Our Hotels:



LONDON - Park Plaza Westminster



LONDON - Hilton Metropole



NEWPORT - Hilton



WATERFORD - Granville



KILLARNEY - Killarney Avenue



DUBLIN - Royal Marine



BELFAST - Europa



EDINBURGH - Hilton Grosvenor



YORK - Mercure Fairfield Manor



STRATFORD-ON-AVON Holiday Inn



WINDERMERE-MacDonal Old England



HEATHROW - Marriott

Y63 British Isles Tour 2016 - the English Lake District September 27-30

Tour extension: Cost: \$825 per person, double occupancy

The English Lake District, a region and national park in northwest England, is a popular holiday destination. It's known for its glacial ribbon lakes, rugged fell mountains and historic literary associations. Market towns such as Kendal, Keswick and Ambleside are bases for exploring the area and home to traditional inns, galleries of local art, sightseeing and dining.

September 27 London => Lake District Tuesday - our tour ends early for some with flights back to the U.S. The rest of us will take a three day tour northwest to the English Lake District. Morning take a 2.5 hour comfortable train north from London through the beautiful countryside to Bowness-on-Windermere. Check into our hotel, the historic MacDonal Old England Hotel and Spa. Afternoon guided tour of the area including home of Beatrix Potter and the lovely Lakeland village of Hawkshead. Return to our Bowness hotel by a lake cruise.

September 28 Lake District Wednesday - take an all day guided mini-van tour of the many lakes and sights of the area. Visit homes of great English authors including Henry Wadsworth. Enjoy an Ullswater Lake steamer cruise back to our hotel on Bowness on Windermere.

September 29 Lake District => London Thursday - morning relax and enjoy our last day of our tour. Join a guided nature walking tour along the lake. After lunch, return via private coach direct to the Marriott Heathrow Airport where we will enjoy our last cocktail reception and dinner together.

September 30 Friday - morning flights back home. Shuttles available from the hotel to meet your flight schedule. You will most likely arrive home the same day. You gain back five hours flying to the East Coast and eight hours to the West Coast.

Tour Highlights - private driver guided tours through the Lake District via mini-van:

This private tour is designed to take us back in time to appreciate a Lake District that was far removed from the popular visitor destination of today. A time when farming was the most important industry, roads were made of dirt and transport was by horse and carriage, steam trains and lake steamers. This was the Lakeland of Beatrix Potter - a landscape of small fields, herdwick sheep, whitewashed farms and stunning scenery.

Windermere - a stunning view of the largest lake in England, Tarn Hows - a famous beauty spot once owned by Beatrix Potter, Coniston Water, Near Sawrey, Hawkshead - a lovely Lakeland village with the Beatrix Potter gallery, Esthwaite Water, and a Windermere lake cruise back to the hotel.

Our driver guides will show us small villages, beautiful lakes and quiet viewpoints including a visit to Beatrix Potter's home at Hill Top in the small village of Near Sawrey with time to explore the little village of Hawkshead, a maze of narrow streets and whitewashed buildings.



Meet our Tour Guides..



Globus



British Tours Group



Millennium Travel

British Tours Group - London

“Since 1958, British Tours has recruited many of the best tour guides available in England. Our team of 47 London tour guides, both men and women, are chosen for their enthusiasm, personality, academic backgrounds and professional experience. They are extensively trained by us and qualified and registered with the London Tourist Board.”

Globus – Outside London

“There’s no better way to get to know your destination than through the eyes of your Tour Director. Averaging over a decade... we’d like you to meet one of our experienced Tour Directors who is representative of the type of expert that will be with you on your British Isles tour. ANNMARIE CLANCY Years of Experience: 31 *”I so enjoy the opportunity to share landscapes and cultures. Packed into my tiny part of the world is a depth and breadth of geographical and historical variety that simply cannot be surpassed.”*

Lake District Tours – Millennium Travel

“Lake District Tours has been operating tours from Windermere in the Lake District for 20 years. In that time we have remained true to our belief that small group tours provide a more personal and enjoyable way of experiencing the area. We are large enough to handle most requests but remain small enough to care and are able to go that extra mile to provide a personal service that our guests appreciate.

Our tours are designed to make the most of your visit to Windermere the Lake District and give you the chance to visit the most beautiful parts of the National Park. Tours are planned to arrive at popular spots during quiet times of the day – we believe it is *how you experience* the Lake District that makes for a memorable tour.”

Our key Travel Consultants

Tour sponsor:



Yale Class of 1963 Tour leader/members (Jon Larson and Jim Thompson)
jon_larson@hotmail.com JLThompson@mmcanby.com

Tour Fiscal agent: CEF Travel - the educational travel division of Charity Enablers Foundation
ASTA #900243901

Charity Enablers Foundation – www.lff1.org The Larson Family Foundation a 501c3

a California charitable nonprofit (501c3) public benefit corp. Corporation id#: 02237360 FEIN#: 68-0460563



TaoEducation The Presidio Trust GGNPC Casa Grande Interfaith Center Indian Canyon Iliahi Foundation Cultural Conservancy

Hotels, Transportation and lead Tour Guide

Globus - <http://www.globusjourneys.com>



Discount airfares and airport transfers:
Globus U.S. Travel booking Agent:



Julie Gardner, Gardner Travel Service, Inc. julie@gardnertravel.com **1-877-510-4653**

Travel insurance: TravelSafe –



<https://www.travelsafe.com>

Agent: Travel Protection Services, Dave Lemieux 800-694-5921

Coach Transport: London Mint Coaches <https://mintcoaches.co.uk/> 0207 624 6796

Lake District Tours: Andy Binns Cumbria Blue Badge Tourist Guide
Millennium Travel Ltd - Lake District Tours Tel 015395 52106